

Green@cycle

recycling collection service

January 2025

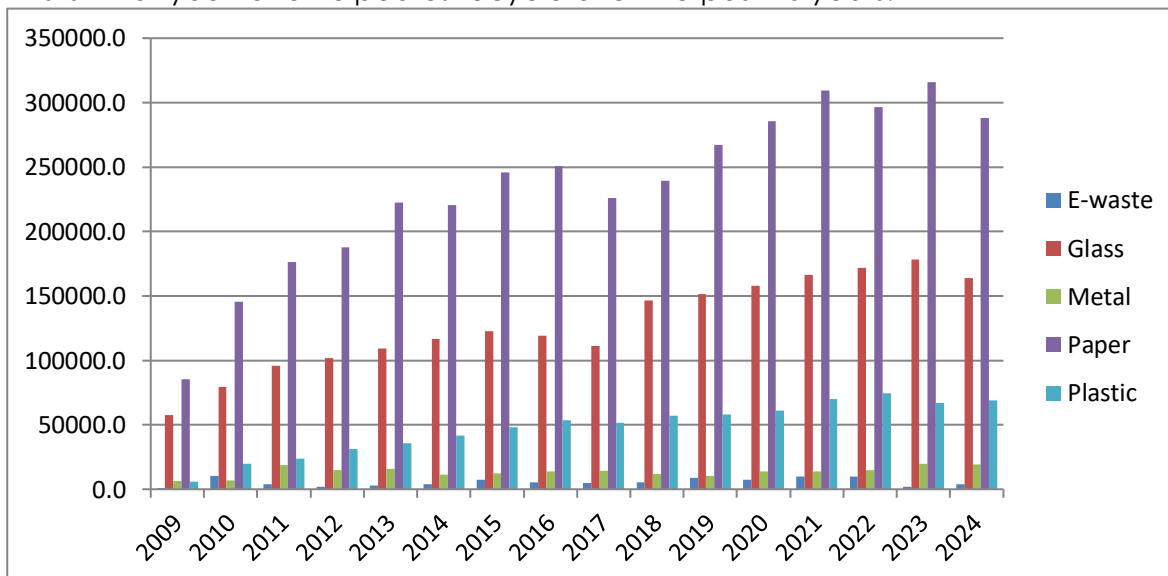
Dear Greencyclers

Firstly, thank you for your continued support – we are so grateful, particularly as our customer base is dwindling with all the emigration and 'semigration'! Thanks also to everyone who donated to the staff Christmas Box – we managed to pass on close to R1000 to each staff member 😊.

It is two years since our last increase. To ensure we can continue to provide our signature service & as many jobs as possible, and fight against diminishing landfill space, increased fuel costs and the rest of life's challenges, we will be increasing prices from 1st March.

We employ close to 30 people (and manage to offer them a few perks!) and on top of that, we divert millions of kilos of waste from landfill. Our confidential document shredding service continues to grow, and we have a solid reputation for reliability and document security; click here for options: <https://www.greencycle.co.za/shredding.html>

This is what you have helped us recycle over the past 16 years.



We do try to sell on as many items as possible for reuse, before sending them for recycling and are becoming the go-to place for second hand jars/bottles, as well as moving boxes, bubble wrap, stationery and books.

We have also partnered with eWASA to promote more recycling of not only electronic waste, but most products made by their Extended Producer Responsibility (EPR) partners. As part of this project, we are also able to add an extra 15c per kilo to monies we pay to our local community members when they collect recycling. It may not be much, but it does make a difference.

For most, this year's increase equates to a monthly cup of coffee (filter only!). The attached tables show the prices, which will be **effective 1st March 2025**. If you are unsure of anything, or would like to change your collection option, just let us know.



Please also join our "Can I Recycle This" Whatsapp group if you have not done so already.

<https://chat.whatsapp.com/2KDYragkDvB5b16suRVtOG>

Customers who have made an **annual payment** will only be affected by the price increase the next time their annual payment is due.

Lastly, a quick note about bag allowances. Your monthly allowance will not be the same as the number of complimentary bags you receive. Please check the chart below to see how many bags each option allows for.

For those who wish to purchase additional clear bags, the charge will be R60 from 1st March.

Thank you, as always, for your continued support.

Laura & the Team

COLLECTION OPTION	CHARGES & PAYMENT OPTIONS (inc VAT) Payable by EFT, stop order or cash payment to drivers.	VOLUME TO BE COLLECTED PER COLLECTION (averaged over the month) full standard size garbage bags used as a guide
WEEKLY COLLECTION AREAS – RESIDENTIAL see list of suburbs		
Weekly collections (from verge)	R180 per month (paid monthly) OR R1980 annual payment: includes a free month (paid in advance due by end of first month)	1-3 bags' worth. Bags to be tied closed and outside , ready for collection. (see extra service option)
Monthly Collections (from verge): One collection per month, as scheduled by Greencycle	R80 per month (paid monthly) OR R880 annual payment: includes a free month (paid in advance ; due by end of 1st month)	1-4 bags' worth. Bags to be tied closed and outside , ready for collection. (see extra service option)
FORTNIGHTLY COLLECTION AREAS - RESIDENTIAL see list of suburbs		
Fortnightly Collections (from verge)	R180 per month (paid monthly) OR R1980 annual payment includes a free month (paid in advance ; due by end of 1st month)	1-5 bags' worth. Bags to be tied closed and outside , ready for collection. (see extra service option)
Monthly Collections (from verge): One collection per month, as scheduled by Greencycle	R90 per month (paid monthly) OR R990 annual payment: includes a free month (paid in advance ; due by end of 1st month)	1-4 bags' worth. Bags to be tied closed and outside , ready for collection. (see extra service option)
RESIDENTIAL WHEELIE BIN COLLECTIONS		
Wheelie Bin Collections (or bulk bag of cardboard)	R60 (min R60 charge per visit)	Per full wheelie, per collection (inc. replacement of liner). Half full wheelies charged accordingly, if applicable.
WHEELIE BIN RENTAL	R60	Per wheelie, per month

OTHER CHARGES AND NOTES	
Extra Service Option (if required) Standing arrangement to ring bell or phone to collect	R20 per month (R10 for monthly customers). This service will apply if you prefer or need to keep your recycling inside your home, complex or business (will not apply for complexes with 2 or more Greencycle customers). Recycling must be bagged and ready for collection.
Missed monthly collections	If you rearrange your monthly collection date in advance , there will be no extra charge. If you miss your monthly collection and rearrange after the fact, there will be a R15 charge for the extra visit & administration. Note that we will not phone or ring the bell for any customer, unless you are an 'Extra Service' customer.
Extra bags/volume collected	R15 per extra bag (volumes averaged over the month & invoiced at the end of the month).
Extra time	R30 per 5 minutes or part thereof
Overdue payments	R30 admin charge each time we follow up on overdue accounts (60 days over).

COLLECTION OPTION	CHARGES & PAYMENT OPTIONS (inc VAT) Payable by EFT, stop order or cash payment to drivers.	VOLUME TO BE COLLECTED PER COLLECTION (averaged over the month) full standard size garbage bags used as a guide
WEEKLY COLLECTION AREAS – BUSINESS see list of suburbs		
Weekly collections (from verge)	R210 per month (paid monthly) OR R2310 annual payment: includes a free month (paid <i>in advance</i> due by end of first month)	1-3 bags' worth. Bags to be tied closed and outside , ready for collection.
Monthly Collections (from verge): One collection per month, as scheduled by Greencycle	R90 per month (paid monthly) OR R990 annual payment: includes a free month (paid <i>in advance</i> ; due by end of 1st month)	1-4 bags' worth. Bags to be tied closed and outside , ready for collection.
PREMIUM Weekly Collections Includes extra time and other added services (to suit some businesses or complexes)	R380 per month	1-6 bags' worth plus 5 minutes per collection. Allows for entering premises and collecting directly from bins/recycling area.
PREMIUM PLUS Weekly Collections (for larger volumes)	R510 per month	1-10 bags' worth plus 5 minutes per collection. Allows for entering premises and collecting directly from bins/recycling area.
PREMIUM ULTRA Weekly Collections	R630 per month	1-20 bags' worth plus 10 minutes per collection. Allows for entering premises and collecting directly from bins/recycling area.
FORTNIGHTLY COLLECTION AREAS - BUSINESS see list of suburbs		
Fortnightly collections (from verge)	R210 per month (paid monthly) OR R2310 annual payment: includes a free month (paid <i>in advance</i> due by end of first month)	1-5 bags' worth. Bags to be tied closed and outside , ready for collection.
Monthly Collections (from verge): One collection per month, as scheduled by Greencycle	R100 per month (paid monthly) OR R1100 annual payment: includes a free month (paid <i>in advance</i> ; due by end of 1st month)	1-4 bags' worth. Bags to be tied closed and outside , ready for collection.
PREMIUM Fortnightly Collections Includes extra time and other added services (to suit some businesses or complexes)	R380 per month	1-8 bags' worth plus 5 minutes per collection. Allows for entering premises and collecting directly from bins/recycling area.
BUSINESS WHEELIE BIN/BULK BAG COLLECTIONS		
Wheelie Bin Collections (or bulk bag of cardboard)	R65 (1-10 wheelies per month, discounted to R58.00 per bin thereafter) (min R65.00 charge per visit)	Per full wheelie, per collection (inc. replacement of liner). Half full wheelies charged accordingly, if applicable.
WHEELIE BIN RENTAL	R60	Per wheelie, per month

BULK BAG COLLECTION	R100 per bulk bag collected (missing bulk bags charged at R90)	Per bulk bag, per collection (bulk bags rotated each collection)
----------------------------	--	--

OTHER CHARGES & NOTES	
Missed monthly collections	If you rearrange your monthly collection date in advance , there will be no extra charge. If you miss your monthly collection and rearrange after the fact, there will be a R15 charge for the extra visit & administration.
Extra bags/volume collected	R15 per extra bag (volumes averaged over the month & invoiced at the end of the month)
Extra time	R30 per 5 minutes or part thereof
Overdue payments	R30 administration charge each time we follow up on overdue accounts (60 days+).

COLLECTION OPTION	CHARGES & PAYMENT OPTIONS (inc VAT) Payable by EFT, stop order or cash payment to drivers.	VOLUME TO BE COLLECTED PER COLLECTION (averaged over the month) full standard size garbage bags used as a guide
OTHER COLLECTION OPTIONS – ALL AREAS		
OCCASIONAL, ONE-OFF COLLECTIONS (scheduled for the day & timeslot we are in your area)		Recycling to be bagged and ready for collection
Option 1 Option 2 Option 3 Option 4	R80 per collection R120 per collection R170 per collection R260 per collection	1-3 bags' worth 4-6 bags' worth 7-9 bags' worth 10-12 bags' worth
		Our staff will not take more than 12 bags unless prior arrangements have been made.
MISSED ONE-OFF/ WHEELIE COLLECTION	If you arrange a one-off or wheelie collection and we are unable to access your bags, there will be a R15 charge to offset the cost of the visit	
DEDICATED LOADS Hyundai (7m ³) or Dyna (12m ³)	R650 per hour	Up to 7m ³ and/or 1.2 tonnes Up to 12m ³ and/or 1.4 tonnes
GROUP COLLECTIONS Bags collected from a <u>single location</u>	R390 R550	Up to 10 bags per week Up to 20 bags per week
WHEELIE BIN RENTAL	R60	Per wheelie, per month
BOX COLLECTIONS (no new boxes available)	R120	Per box, per collection

ALL PRICES INCLUDE VAT

COLLECTION OPTION	CHARGES & PAYMENT OPTIONS (inc VAT) Payable by EFT, stop order or cash payment to drivers.	VOLUME TO BE COLLECTED PER COLLECTION (averaged over the month) full standard size garbage bags used as a guide
REFUSE COLLECTIONS - FARM CUSTOMERS ONLY		
Refuse Collections	R18.00 (large bag) R12.00 (small bag) (Invoiced monthly in arrears)	Per yellow bag collected Per grey bag collected Bags to be <u>tied closed</u> and outside , ready for collection
Yellow Bags Grey Bags	R4.40 each (R110 per pack 25) R2.80 each (R70 per pack of 25)	Order from Greencycle
Refuse not in Yellow/Grey Bags	R4.40 for yellow bag PLUS R30 Extra Time charge (for packing)	For occasions when refuse is placed out for collection, not already in yellow bags

COLLECTION OPTION	CHARGES & PAYMENT OPTIONS (inc VAT) Payable by EFT, stop order or cash payment to drivers.	VOLUME TO BE COLLECTED PER COLLECTION (averaged over the month) full standard size garbage bags used as a guide
CONFIDENTIAL DOCUMENT SHREDDING		
Off-Site (at Greencycle)	R7.00 (minimum charge of R50) For bulk discounts, please contact us	Per Kilogram Collection charges apply
On-site (at your premises)	R1000 for the first hour of each day (minimum charge) R650 per subsequent hour	Charged hourly
Shredding Boxes	From R190 per month	See website for options

ALL PRICES INCLUDE VAT